



EXPERT QUARTERLY ACTIVITY, January 2011

Expert: Johann Steszgal
TC: ETSI TC ITS
Last TC/WG meeting date: WGs: 17.-21.1.2011, Regensburg, Germany
WGs and TC: 4.10.-8.10.2010, Mainz, Germany
Next TC/WG meeting date: ETSI ITS workshop and TC 9-11 February 2011,
near Venice, Italy

1. Meetings

- **TC/WG meeting:** WGs: 17.-21.1.2011, Regensburg, Germany

2. NORMAPME mirror committee

- **Members:** Marco Digioia, ITA and Frederic Keymeulen, BEL

3. Main issues arising from TC/WG meeting or from reporting period activities

ICT Standardisation Work Program 2010-2013

It was agreed that the ICT standardisation WP be used to finance both development of base standards and test specifications in accordance with the Mandate.

The Commission has accepted all 5 STF proposals provided by ETSI TC ITS:

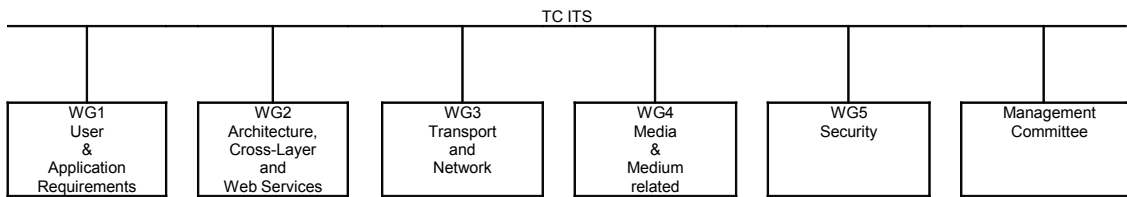
- VI- ITS4 EC2010-04 Radio Channel configuration and channel Selection
- VJ-ITS1/3 EC2010-05 Test Platform CAM/DENM and GeoNetworking protocols
- VK-ITS4 EC2010-06 Test G5 Radio conformance testing in support of interoperability
- VL-ITS2 EC2010-07 Test suite for European Electronic Toll Service (EETS) and the ISO CALM FAST service
- VM-ITS5 EC2010-09 Security standards to support ITS Work Programme

The Circular letter (CL) will be distributed Friday 3 December in parallel with the ETSI Board approval procedure.

It is envisaged that the preparatory meetings will take place 16-18 February 2011 and the work begin immediately.

Of course all TC ITS members as well as other ETSI member experts in the relevant areas are invited to take part in this important activity in accordance with the procedures mentioned in the Circular Letter.

TC ITS has the following structure:



All Working Groups are of interest for SMEs, because ITS-applications will be based on the results of all groups. However some of the topics (Work Items) in the Working Groups 1, 2 and 5 are especially important for SMEs. Therefore the main focus of my work will be to discuss SME issues in the TC session itself and in the Joint WG activities.

See attached list (an excerpt from the ETSI portal), which shows the standard documents the different working groups are working on.

In this report I would like to focus on the activities of the WG 1 (Requirements) and the joint sessions from WG1, WG2 and WG5. This session was especially dealing with Security and Architecture issues.

Requirements (WG 1):

The following figures are copied from the Draft TS 102 894 V0.0.4

The ITS environment is described in the following figure:

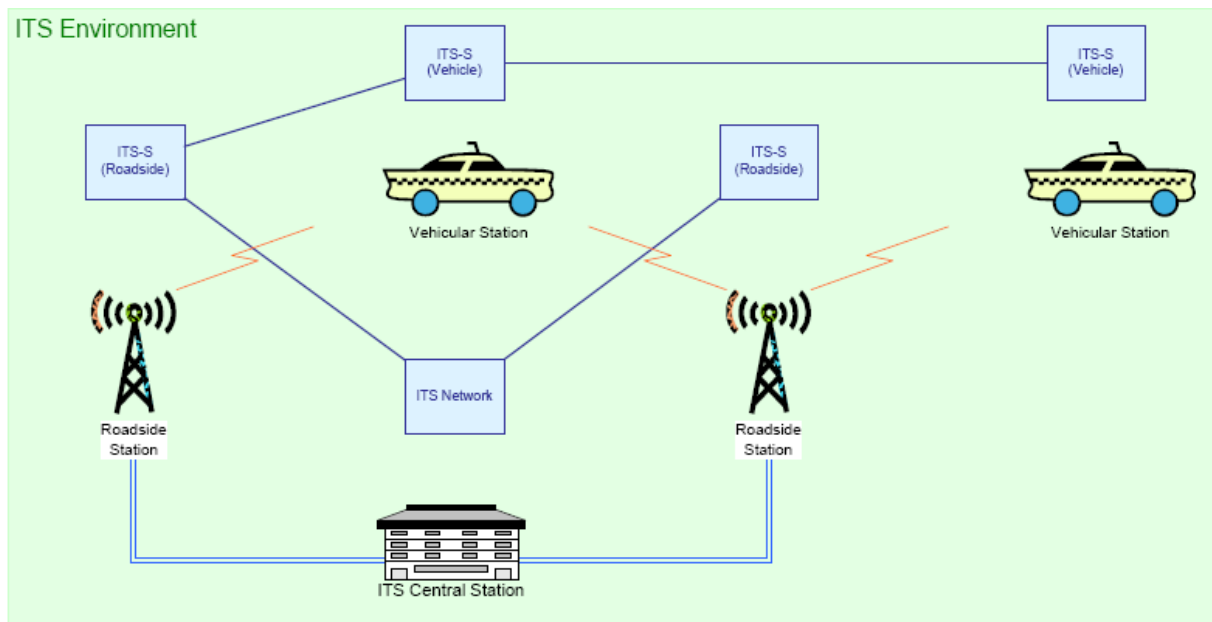


Figure 4.1: Simplified view of ITS environment

The basic set of applications are shown in the next figures:

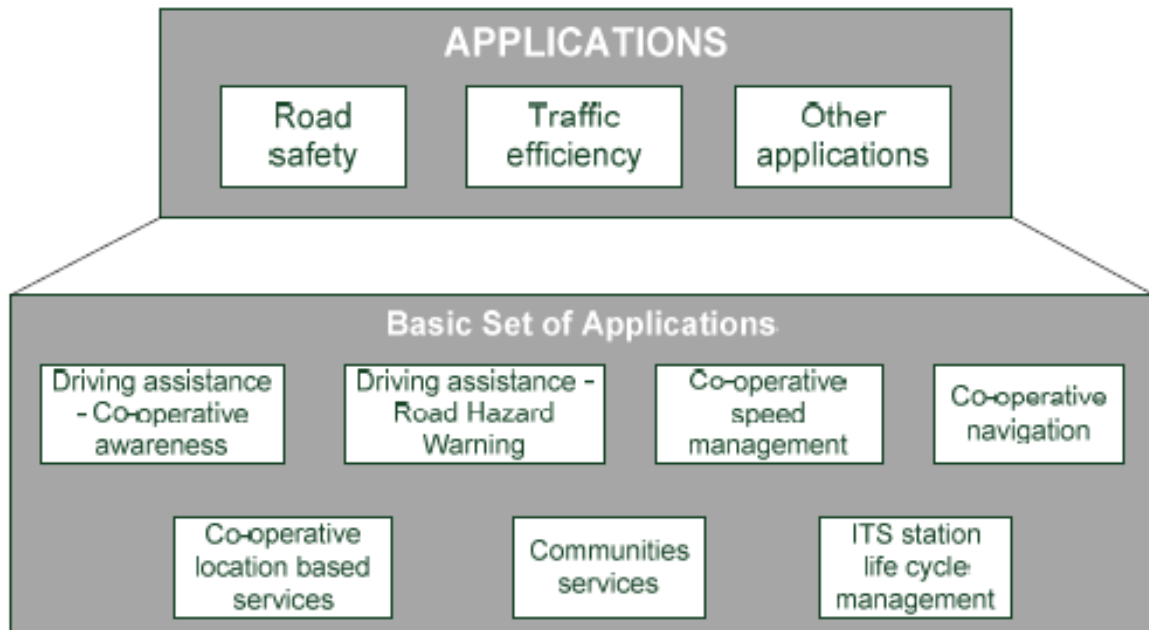


Figure 4.3: ITS Application overview

Tab 4.1: Basic set of applications definition

Applications Classes	Applications	Use cases
Co-operative road safety	Driving assistance – Co-operative awareness	Emergency vehicle warning
		Slow vehicle indication
		Intersection collision warning
		Motorcycle approaching indication
	Driving assistance – Road Hazard Warning	Emergency brake lights
		Wrong way driving
		Stationary vehicle - accident
		Stationary vehicle – vehicle problem
		Traffic condition warning
		Signal violation warning
		Roadwork warning
		Collision risk warning
		Decentralized floating car data – Hazardous location
		Decentralized floating car data - Precipitations
Decentralized floating car data – Road adhesion		
Decentralized floating car data – Visibility		

		Decentralized floating car data – Wind
Co-operative traffic management	Co-operative speed management	Regulatory / contextual speed limits notification
		Greenlight optimal speed advisory
	Co-operative navigation	Traffic information and recommended itinerary
		Enhanced route guidance and navigation
		Limited access and detour notification
In-vehicle signage		
Co-operative local services	Co-operative location based services	Point of Interest notification
		Automatic access control and parking management
		ITS local electronic commerce
		Media downloading
Global Internet services	Communities services	Insurance and financial services
		Fleet management
		Loading zone management
	ITS station life cycle management	Vehicle software / data provisioning and update
		Vehicle and RSU data calibration

Joint WG activities

The main discussion came up from members of WG2, who proposed to simplify the ETSI ITS station architecture by merging the security management functions into the Management layer. This point was discussed very contrary and no solution was achieved. A joint WG meeting in March was suggested to come to a solution.

4. How are these affecting SMEs in Europe?

ITS is especially relevant for the following groups of SMEs:

- engineering companies in the automotive industry,
- ICT companies,
- as well as hardware manufacturing companies etc.

My main responsibility is to point out the business opportunities for these groups and at the same time to secure their possibility to participate in this fast growing business field next to the big players such as Daimler, Renault, Google, Microsoft and the likes.

5. Recommended actions or positions

I feel that my main role is to pay close attention to any further developments in the TC and to report those developments to NORMAPME and SMEs that show their interest.

So far the documents developed are well readable and enriched with graphs. The topics are complex and therefore it is necessary to refer to many other sources and standards. So far the architecture allows an open and especially non-discriminating access to the ITS-Platforms.

In the future the work of the regulation authorities, which will have direct influence on the services, which will be addressed by the ITS-groups, has to be watched and guided, if stakeholders like the SMEs are not recognized in a proper way. At the moment there is no evidence that this is necessary.

6. Other comments

Future activities

- ETSI TC ITS Workshop 9-11 February 2011